



CRE ADVISING

3400-3412 WEST NORTH AVE

LAND FOR LEASE

LOGAN SQUARE/HUMBOLDT PARK

PROPERTY DETAILS

SIZE

- ▶ Land: 17,020 square feet

RENTAL RATE

- ▶ \$4,500 / month NNN ground lease

COMMENTS

- ▶ Vacant land for lease in Logan Square/Humboldt Park
- ▶ Signaled intersection
- ▶ 16,000 traffic count
- ▶ A couple blocks from the 606 trail and just down the street from the beautiful and expansive Humboldt Park grounds
- ▶ Area national retail tenants include Dunkin' Donuts, PNC Bank, McDonald's, BP Gas, T-Mobile, Family Dollar, Little Caesars Pizza, Subway
- ▶ Area local retail tenants include Nick's On North, La Perla Tapatia, Zoku Sushi, Roeser's Bakery, La Encantada
- ▶ Zoning: B3-1
- ▶ 2020 Taxes: \$7,194.29
- ▶ PINs: 13-35-420-040/041/042/043/044/045-0000

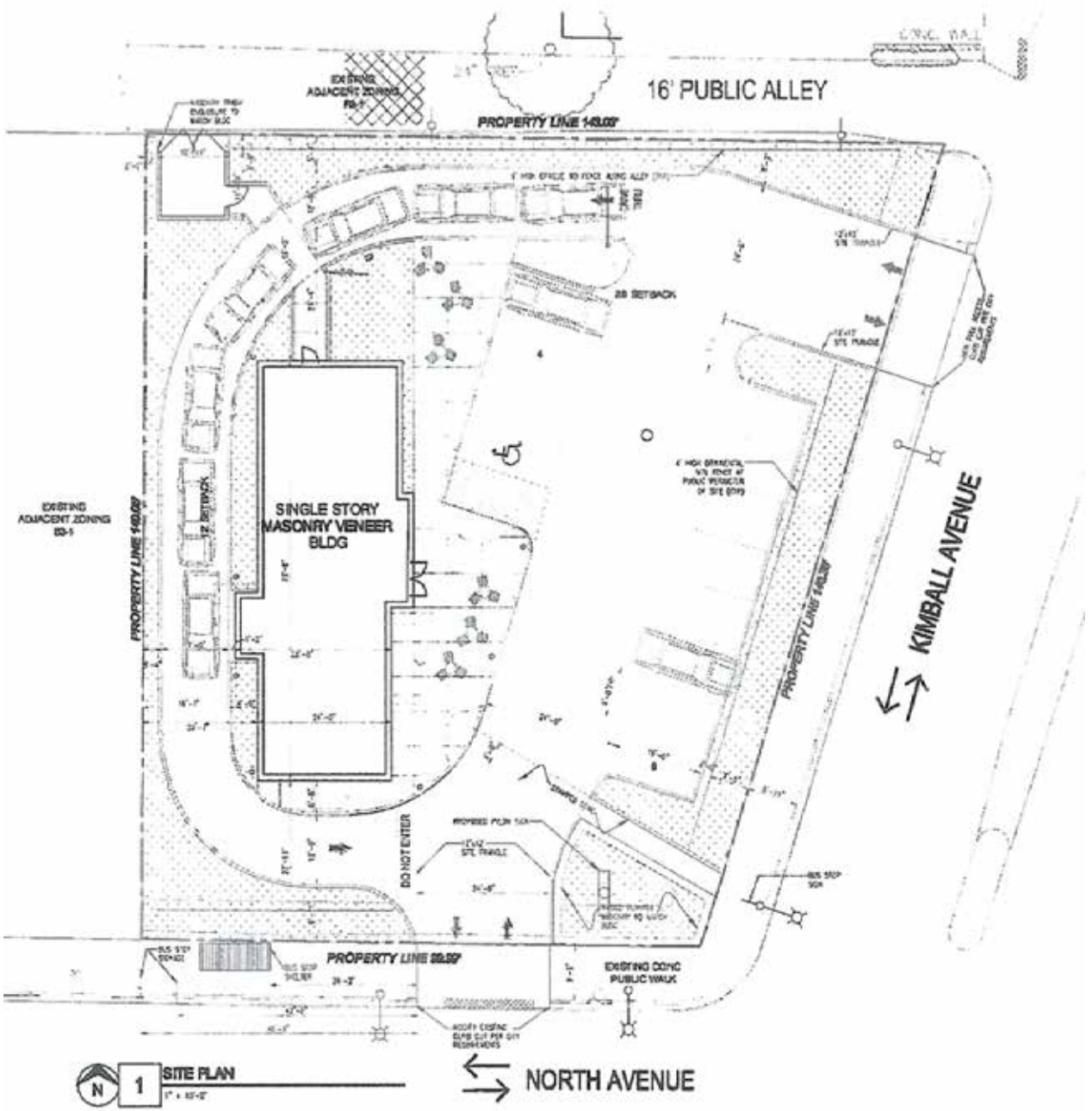
DEMOGRAPHICS

	1 MI	3 MI
POPULATION	61,568	418,419
HOUSEHOLDS	19,563	147,235
MEDIAN HH INCOME	\$56,276	\$68,313
DAYTIME EMPLOYEES	10,543	134,982

*No representation or warranty is made to the accuracy herein.
All broker opinions are subject to market conditions.*



SITE PLAN





3400-3412
NORTH AVE
CHICAGO, IL 60647

EXCLUSIVE AGENTS

STEVE HORVATH
630.430.4300
Steve@CREAdvising.com

JOSH MELLENCAMP
773.414.5406
Josh@CREAdvising.com

CRE ADVISING

401 WEST ONTARIO STREET, SUITE 205
CHICAGO, IL 60654

312.448.6401 www.CREAdvising.com