

CRE ADVISING



802-804 WEST RANDOLPH ST

PRIME RETAIL/RESTAURANT SPACE FOR LEASE

WEST LOOP/FULTON MARKET

SPACE DETAILS

LOCATION

This Restaurant Row gateway location is situated at the definitive corner of Halsted and Randolph in the historic Fulton Market neighborhood.

SQUARE FOOTAGE

- ▶ **First Floor:** Approximately 2,600 SF
- ▶ **Second Floor:** Approximately 4,000 SF plus expandable 2,500 SF option if needed
- ▶ **Total Available:** 6,600-9,100 SF (plus 2,600 SF lower level)

RENTAL RATE

- ▶ Upon request

HIGHLIGHTS

- ▶ Don't miss an opportunity of a lifetime to occupy this premier corner location in Chicago's nationally renowned Fulton Market District!
- ▶ 6,600 SF available over two floors with an additional 2,500 SF expandable space option on the second floor for a total of 9,100 SF total available maximum
- ▶ Turn-key opportunity includes fully equipped 2,600 SF basement, two fully equipped kitchens, rooftop opportunity, and expanded outdoor seating
- ▶ Join the West Loop's culture of restaurants, arts, and new tech companies in this highly trafficked square on Randolph!
- ▶ Neighboring restaurants include the likes of Au Cheval, The Girl and the Goat, Little Goat and Nobu
- ▶ Just steps from Soho House Hotel, Nobu Hotel, Equinox Hotel development and the 167 Green office development
- ▶ Inventive, global eateries and major retailers line the area along with luxurious residential office and apartments
- ▶ The neighborhood boasts high traffic counts and high visibility coming off 90/94 Randolph highway exit.

DEMOGRAPHICS

	1 MI	3 MI
POPULATION	69,613	456,145
HOUSEHOLDS	39,173	231,698
MEDIAN HH INCOME	\$121,963	\$98,005
DAYTIME EMPLOYEES	380,492	817,116

No representation or warranty is made to the accuracy herein. All broker opinions are subject to market conditions.



INTERIOR PHOTOS

FIRST FLOOR



INTERIOR PHOTOS

SECOND FLOOR



INTERIOR PHOTOS

SECOND FLOOR



INTERIOR PHOTOS

KITCHENS

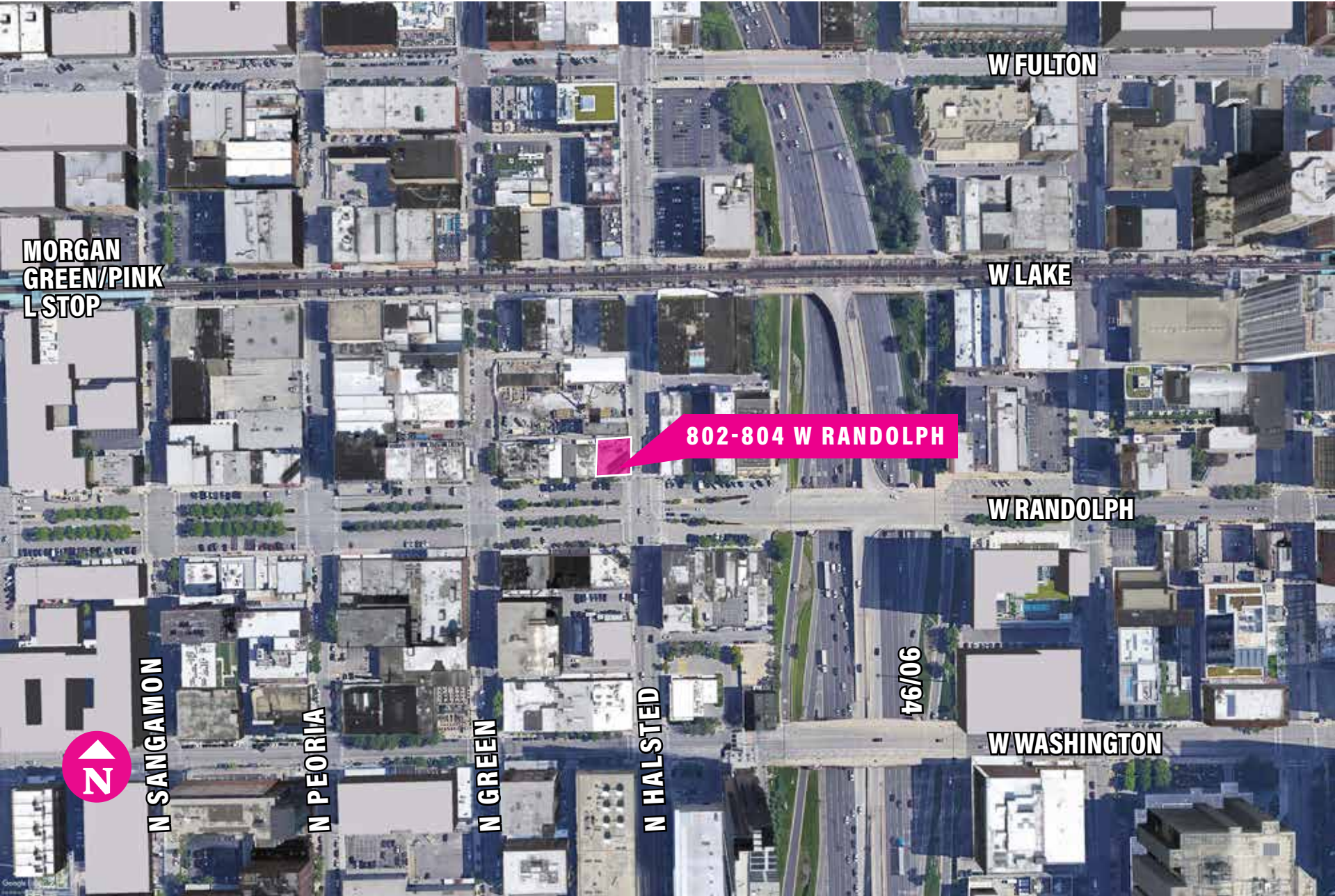


INTERIOR PHOTOS

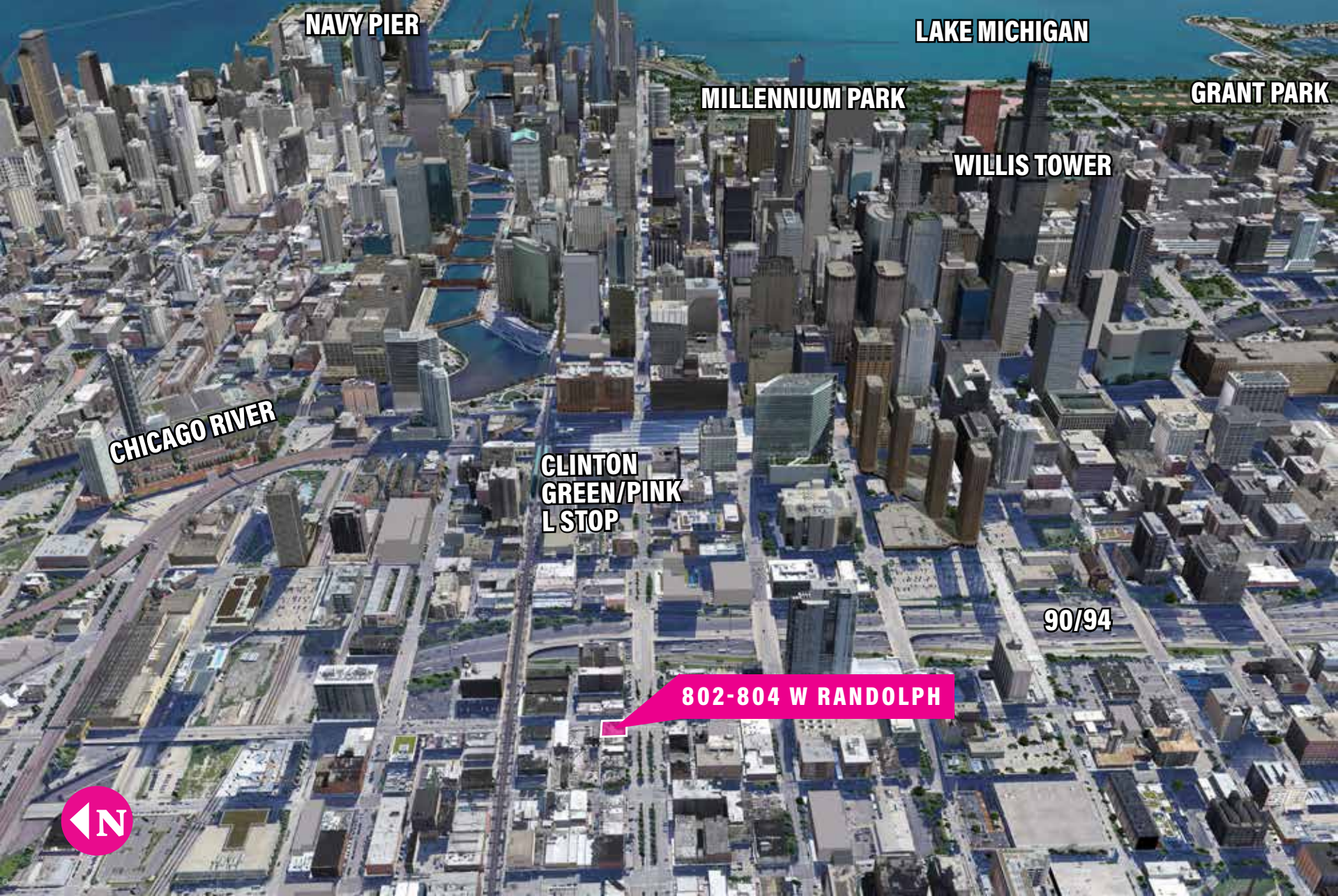
KITCHENS



AERIAL MAP



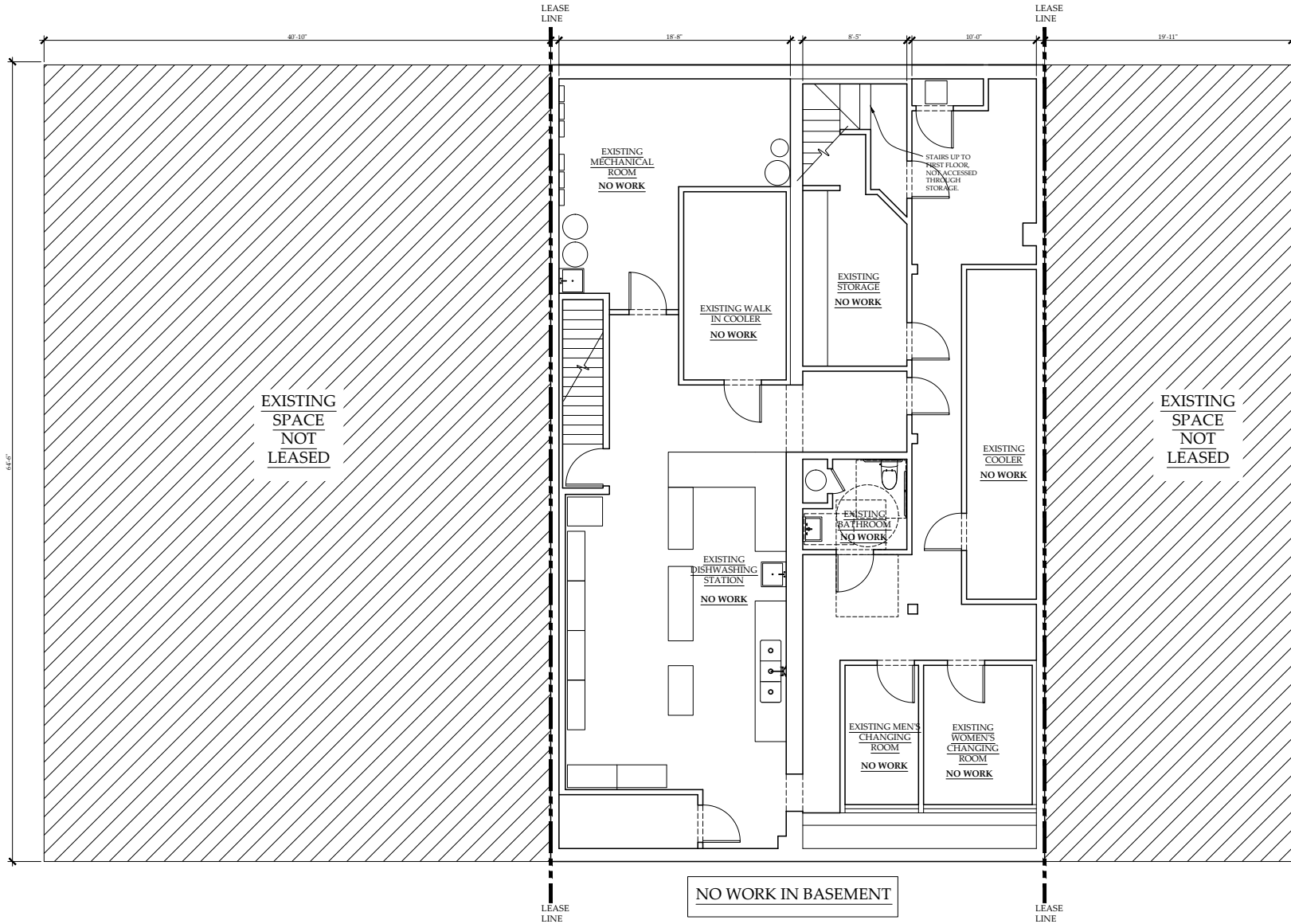
AERIAL MAP



SPACE PLANS

LOWER LEVEL

SUBJECT TO VERIFICATION AND DUE DILIGENCE OF THE RECIPIENT



BASEMENT FLOOR PLAN - FOR REFERENCE ONLY

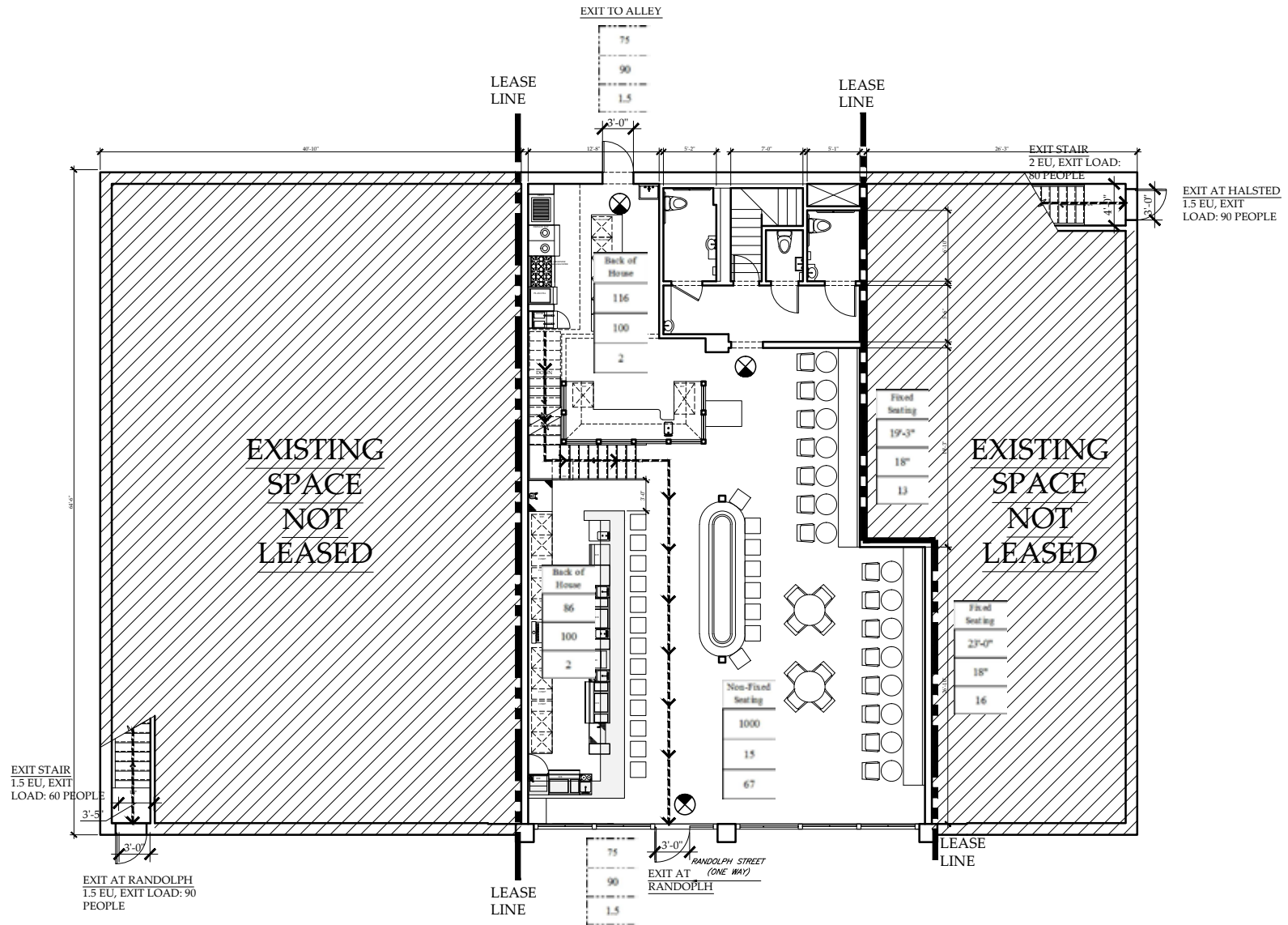
SCALE: 1/4" = 1'-0"



SPACE PLANS

FIRST FLOOR

SUBJECT TO VERIFICATION AND DUE DILIGENCE OF THE RECIPIENT



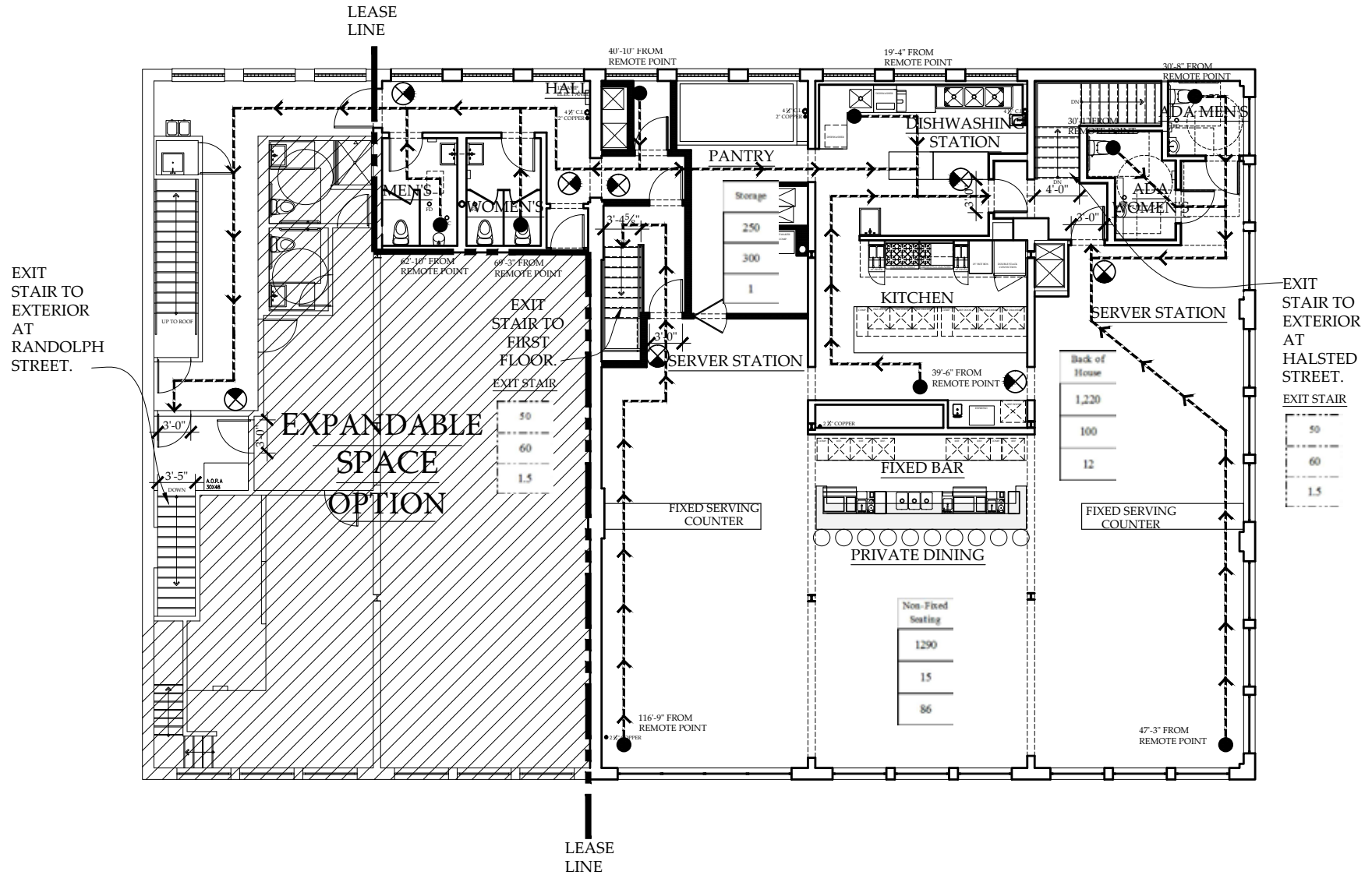
I FIRST FLOOR EXITING DIAGRAM- FOR REFERENCE ONLY
SCALE: 1/8" = 1'-0"



SPACE PLANS

SECOND FLOOR

SUBJECT TO VERIFICATION AND DUE DILIGENCE OF THE RECIPIENT



2 SECOND FLOOR EXITING DIAGRAM- FOR REFERENCE ONLY
SCALE: 1/8" = 1'-0"





**802-804 WEST
RANDOLPH ST
CHICAGO, IL 60607**

EXCLUSIVE AGENTS

STEVE HORVATH
630.430.4300
Steve@CREAdvising.com

JOE GLORIA
847.638.0828
Joseph@CREAdvising.com

CRE ADVISING

401 WEST ONTARIO STREET, SUITE 205
CHICAGO, IL 60654

312.448.6401 www.CREAdvising.com